

# BASE TYPE K1

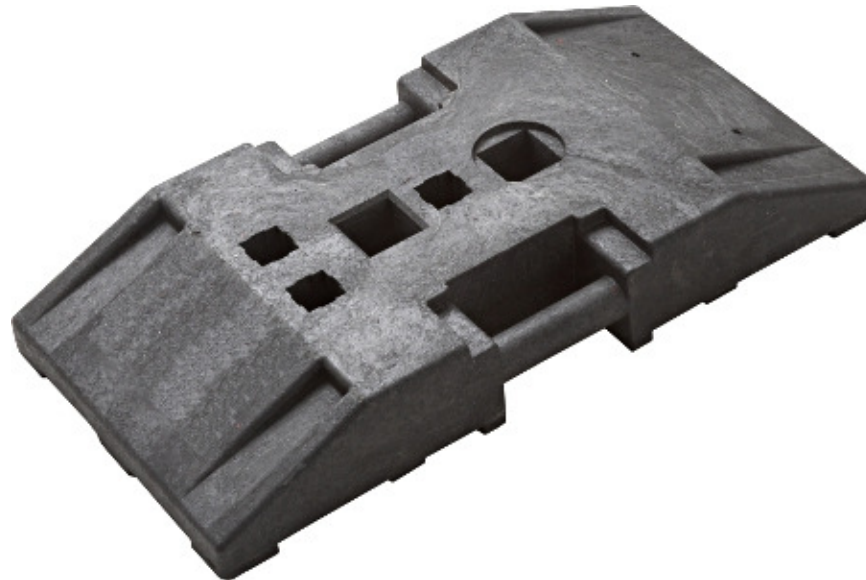
## BASE TYPE K1

Length 790 mm  
Width 400 mm  
Height 110 mm  
Weight 28 kg

Hole: 2 x 60x60 mm  
3 x 40x40 mm  
d = 42 mm  
available also with a cross  
40 x 80 mm

Material: recycling of plastic

Description: heavyweight base  
2 carrying handles  
break proof  
stackable  
resistant against frost, salt, exhaust fumes of oil  
accepts also other manufacturer's delineators



We can provide this base with your company name